

### Heavy Duty Adjustable Wrench

- Chrome Vanadium Steel Material
- Millimeter graduation head for quick adjustment
- Industrial-grade quality for maximum durability and corrosion resistance
- Wider jaw opening increases useful range of fastener sizes



### Adjustable Wrench

- Chrome Vanadium Steel Material
- Millimeter graduation head for quick adjustment
- Black phosphate finish
- Polished head



### Paw Adjustable Wrench

- Chrome Vanadium Steel Material
- Millimeter graduation head for quick adjustment
- Handle weight less by 10% and over 18% wider jaw opening increase torsional rigidity and useful range of fastener sizes
- Rubber (TPR) cushion handle provides a comfortable and strong grip



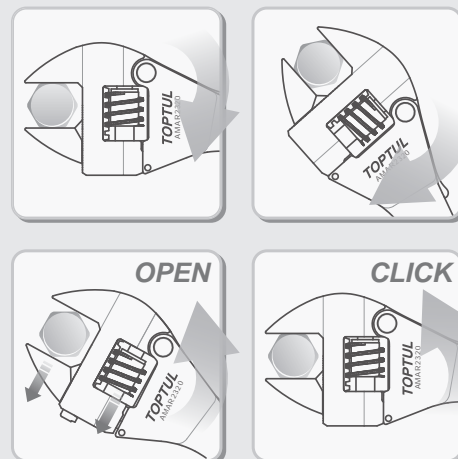
ITEM NO.	SIZE (inch / mm)	MAXIMUM JAW OPENING WIDTH (mm)	L (mm)		
AMAB1710	4" (100)	17.0	110	6	120
AMAB2415	6" (150)	23.9	160	6	90
AMAB2920	8" (200)	28.6	205	6	60
AMAB3325	10" (250)	32.8	255	6	36
AMAB3830	12" (300)	38.1	305	6	24
AMAB5038	15" (375)	50.0	380	2	4
AMAB6045	18" (450)	60.0	460	2	4
AMAB7060	24" (600)	70.0	612	1	5

ITEM NO.	SIZE (inch / mm)	MAXIMUM JAW OPENING WIDTH (mm)	L (mm)		
AMAC2015	6" (150)	20	160	6	150
AMAC2420	8" (200)	24	210	6	72
AMAC2925	10" (250)	29	260	6	36
AMAC3430	12" (300)	34	310	6	24
AMAC4338	15" (375)	43	390	2	8

ITEM NO.	SIZE (inch / mm)	MAXIMUM JAW OPENING WIDTH (mm)	L (mm)		
AMAA2415	6" (150)	23.9	165	6	120
AMAA2920	8" (200)	28.6	210	6	60
AMAA3325	10" (250)	32.8	260	6	48
AMAA3830	12" (300)	38.1	310	6	24

### Ratcheting Adjustable Wrench

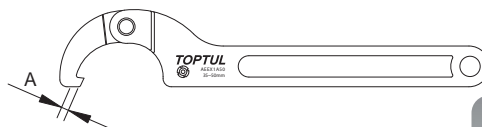
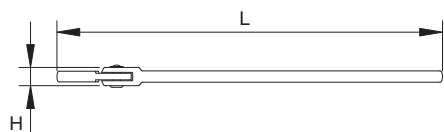
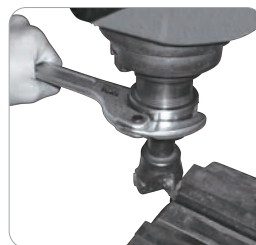
- Chrome Molybdenum Alloy Steel Open-end
- Chrome Vanadium Alloy Steel body
- Ratcheting function for quick and easy operation
- Millimeter graduation head for quick adjustment
- Design for easy using in confined spaces
- Rubber cushion handle provides a comfortable and effective grip



ITEM NO.	SIZE (inch / mm)	MAXIMUM JAW OPENING WIDTH (mm)	L (mm)		
AMAR2320	8" (200)	23	203	12	48
AMAR3125	10" (250)	28	260	6	36

### Adjustable Hook Spanner Wrench

- Made of Chrome Vanadium Alloy Steel
- Ideal for adjusting collars, lock nut rings and bearings
- Five sizes cover the full range of conventional fixed wrenches



ITEM NO.	Diameter Capacity (mm)	Hook Depth (A) (mm)	Hook Thickness (H) (mm)	Overall Length (L) (mm)		
AEEX1A35	13 - 35	3.5	9	170	5	60
AEEX1A50	35 - 50	4.5	10	215	5	40
AEEX1A80	50 - 80	5.5	12	285	5	40
AEEX1AA2	80 - 120	6.0	13	345	5	30
AEEX1AA8	120 - 180	8.0	15	465	2	8

Satin Finished

