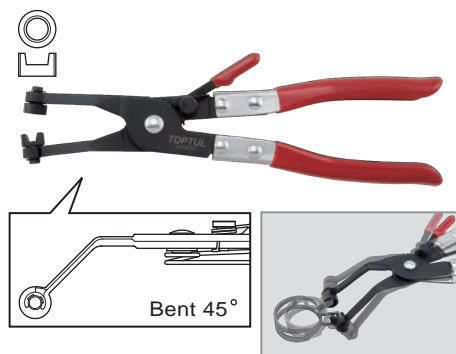


// Curved Hose Clamp Pliers

- ☐ Finger tip "position lock" design for easy replacement of lower radiator hose
- ☐ 45° bending design to fit clamps in deep position

ITEM NO.	LENGTH (mm)		
JDAM039C	235 (9-1/4")	6	48

// Straight Tip Lock Ring Pliers

- ☐ Used to spread snap rings found on brakes, pedal shaft, transmissions, clutch shafts, machine tools, and some piston rings
- ☐ Jaws are scored on outside for secure gripping
- ☐ Drop forged alloy steel, spring loaded joint, comfort grip handle

ITEM NO.	LENGTH (mm)	SPREAD (mm)		
JDAP0109	215 (8-1/2")	25 (1")	6	72

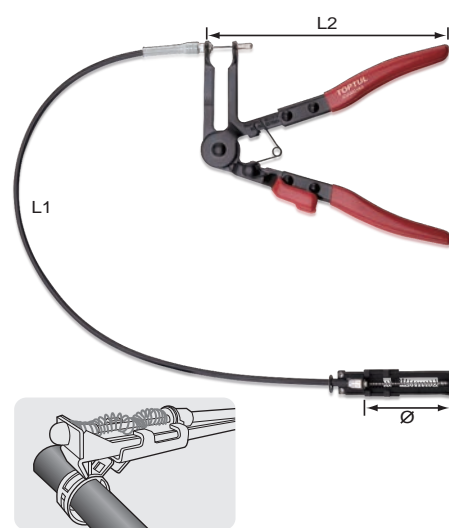
// Angle Tip Lock Ring Pliers

ITEM NO.	LENGTH (mm)	SPREAD (mm)		
JDAP0209	215 (8-1/2")	25 (1")	6	72

// Hose Clamp Pliers

- ☐ Finger tip "position lock" design for easy replacement of lower radiator hose

ITEM NO.	LENGTH (mm)		
JDAM028E	215 (8-1/2")	6	60

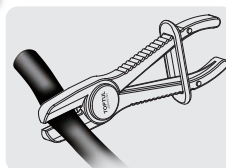
// Flexible Hose Clamp Pliers

- ☐ For replacement of fuel, oil and water hose
- ☐ Hose clamp with flexible 630mm wire
- ☐ Suitable to work in hidden areas and long distance

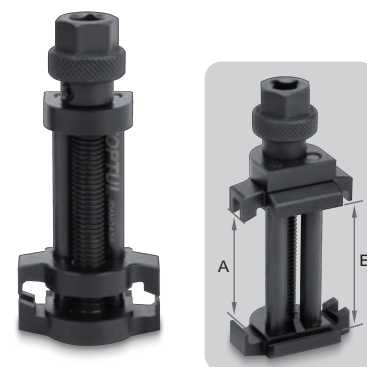
ITEM NO.	L1 (mm)	L2 (mm)	Max. Ø (mm)		
JDAM0163	630	225	53	12	36

// 3PCS**Flexible Line Clamp Set**

Safety Lock

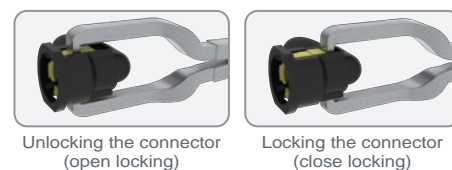


ITEM NO.	CONTENTS	
JGAR0301	1 JDAY0119 Small Line Clamp Ø6 - 19mm (1/4" - 3/4") 1 JDAY0132 Medium Line Clamp Ø13 - 32mm (1/2" - 1-1/4") 1 JDAY0157 Large Line Clamp Ø19 - 57mm (3/4" - 2-1/4")	10 (SET)

// 3 Way Hose Clamp Tool

- ☐ Designed for releasing and refitting most of spring hose clamp
- ☐ For use with 14mm wrench or 1/4" square drive tools
- ☐ Suitable for using in confined space

ITEM NO.	CAPACITY (mm) A	CAPACITY (mm) B	L (mm)		
JDAM0436	1.5 - 35	6.5 - 40	80	10	100
JDAM0460	1.5 - 60	6.5 - 65	105	10	100

// Fuel Line Connector Pliers

- ☐ Suitable for removing or replacing fuel line connectors on fuel filter during engine service
- ☐ The tip pliers can be easy to removal and replacement fuel line connector
- ☐ Ergonomic comfort-grip handle
- ☐ Applications: VW, Audi, Fiat, GM, Opel, Vauxhall, Mercedes-Benz and etc.

ITEM NO.	LENGTH (mm)		
JDDBY0109	230 (9")	6	48