

// Metal Pressure Oil Can

- ☐ Forced feed pump design
- ☐ Thumb press lever action for easy one hand operation
- ☐ Ergonomic comfort-grip handle
- ☐ Material: Metal body, Brass pump, Nylon cover with handle
- ☐ Applied to lubricate the components of machines for steel and automotive industries etc.



ITEM NO.	CAPACITY c.c.	SPOUT HOSE TYPE	HOSE LENGTH (mm)	📦
NCAA0123	225	Flexible	135	25
NCAA0135	350	Flexible	135	25
NCAA0235	350	Rigid	115	25

// Plastic Pressure Oil Can

- ☐ Forced feed pump design
- ☐ Thumb press lever action for easy one hand operation
- ☐ Ergonomic comfort-grip handle
- ☐ Material: Plastic body, Brass pump, Nylon cover with handle
- ☐ Applied to lubricate the components of machines for steel and automotive industries etc.



ITEM NO.	CAPACITY c.c.	SPOUT HOSE TYPE	HOSE LENGTH (mm)	📦
NCAB0150	500	Flexible	135	25

// Caulking Gun

- ☐ 9" ladder hook steel frame caulking gun
- ☐ Standard 300ml / 10 oz. cartridge
- ☐ Hardened and zinc-coated piston hex steel rod
- ☐ Riveted pressure plate & push rod
- ☐ Durable die-cast Zinc Alloy handle and trigger
- ☐ Quick release thumb lever
- ☐ Built-in seal puncture tool
- ☐ Thrust ratio: 10:1
- ☐ Ideal for latex, silicone, adhesives, sealant, rubber compound & polyurethanes



ITEM NO.	SIZE (inch)	📦	📦
JJAY0902	9	10	30

// Revolving Barrel Caulking Gun

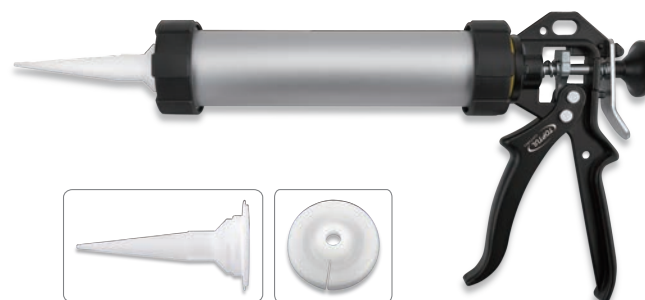
- ☐ 9" ladder hook steel frame caulking gun
- ☐ Standard 300ml / 10 oz. cartridge
- ☐ Easy load, revolving open barrel
- ☐ Hardened and zinc-coated piston round steel rod
- ☐ Durable die-cast Aluminum Alloy handle and trigger
- ☐ Quick release thumb lever
- ☐ Additional eyelet to attach to a safety strap
- ☐ Thrust ratio: 13:1
- ☐ Ideal for latex, silicone, adhesives, sealant, rubber compound & polyurethanes



ITEM NO.	SIZE (inch)	📦	📦
JJAY0903	9	5	15

// Aluminum Tube Caulking Gun

- ☐ 9" ladder putter steel frame caulking gun
- ☐ Standard 300ml / 10 oz. cartridge
- ☐ Seamless die-cast Aluminum Alloy tube and durable trigger
- ☐ Riveted pressure plate & push rod
- ☐ Quick release thumb lever
- ☐ Additional eyelet to attach to safety strap
- ☐ Thrust ratio: 13:1
- ☐ Ideal for latex, silicone, adhesives, sealant, rubber compound & polyurethanes



ITEM NO.	SIZE (inch)	📦	📦
JJAY0904	9	5	15

☐ Includes 1 cone nozzle.